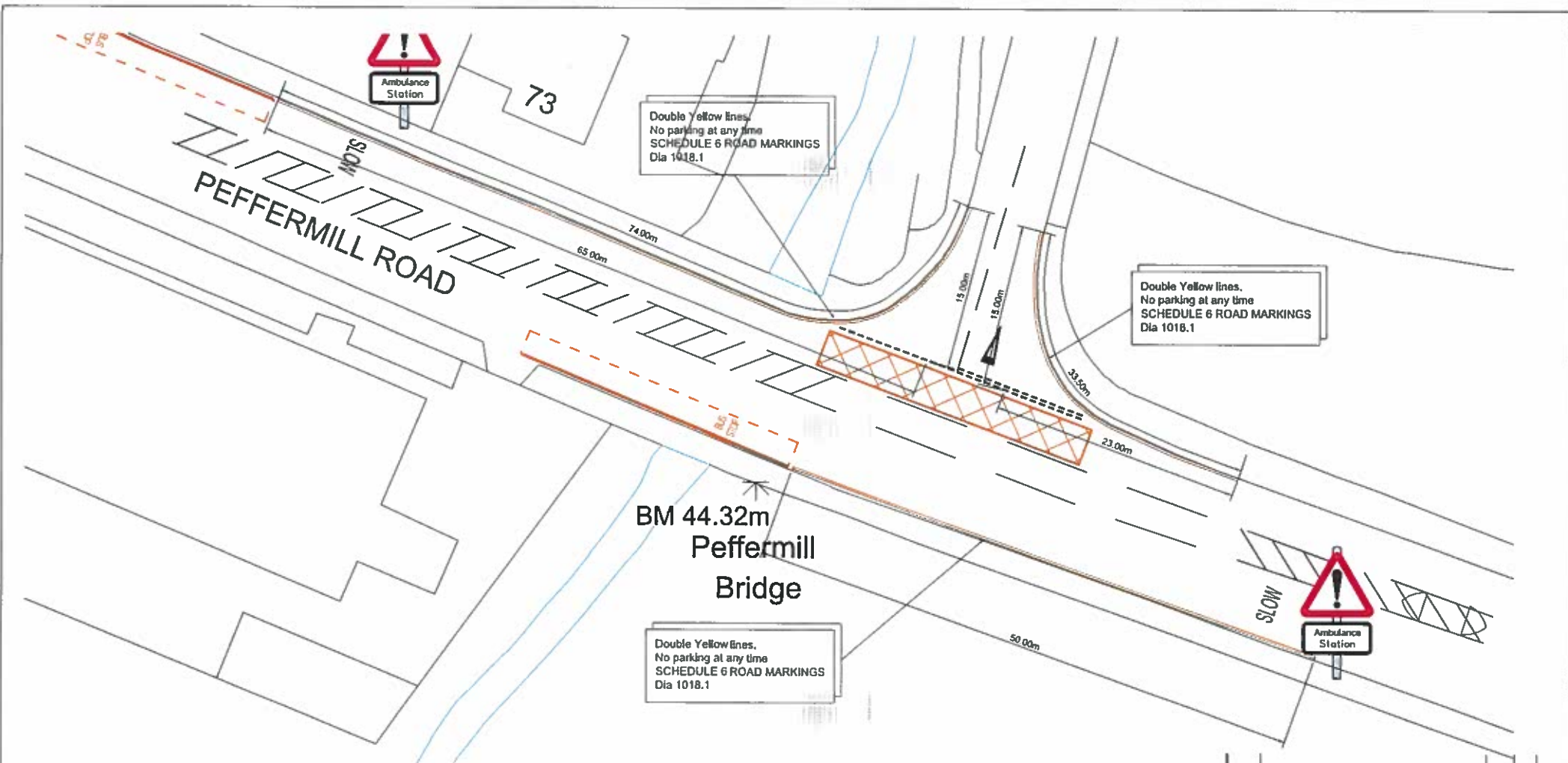


**• EDINBURGH •**  
THE CITY OF EDINBURGH COUNCIL

The City of Edinburgh Council East Neighbourhood Office 101 Niddrie Mains Road, Edinburgh EH16 4ZG Tel. No. 0131 - 529 - 3111	<b>East Neighbourhood Environment Team</b>	
<b>BRUNSTANE ROAD PARKING RESTRICTION EXTENSION</b>		
Date: April 2014 Scale:	Job. No.	Drawn by: KDA Checked by: AH
<b>Drg No. W17/002/RM/APR 2014</b>		



**KING'S HAUGH  
PARKING RESTRICTIONS  
Scale 1:250**

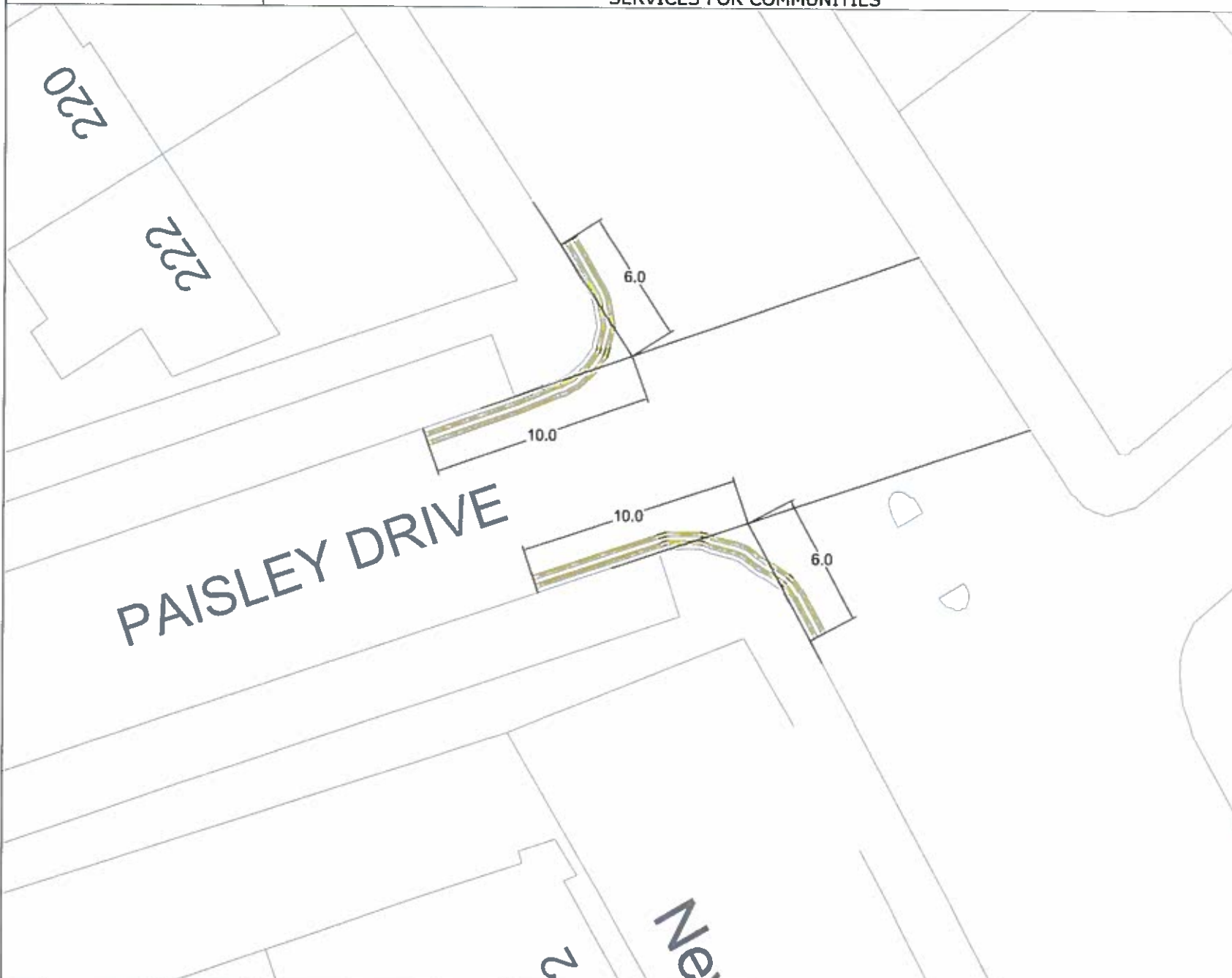
Rev	Description	Date	By	Chkd
 <b>EDINBURGH</b> THE CITY OF EDINBURGH COUNCIL				
The City of Edinburgh Council East Neighbourhood Office 101 Niddrie Mains Road, Edinburgh EH16 4ZG Tel. No. 0131 - 529 - 3111			<b>East Neighbourhood Environment Team</b>	
<b>KING'S HAUGH PARKING RESTRICTIONS</b>				
Date: Apr 2014 Scale: As Shown	Job. No.	Drawn by: KDA Checked by: AM		
<b>Drg No. W17/003/RM/Apr 2014</b>				

DRG. NO.

SERVICES FOR COMMUNITIES

DRG. NO.

NOTES:



PAISLEY DRIVE

220

222

6.0

10.0

10.0

6.0

2

Nei

REV	DETAILS	DATE	BY

**• EDINBURGH •**  
 THE CITY OF EDINBURGH COUNCIL

SERVICES FOR COMMUNITIES  
 The City of Edinburgh Council  
 101 Midlothian Road  
 Edinburgh EH16 4DS  
 Tel. No. 0131-529 3111

EAST  
 NEIGHBOURHOOD

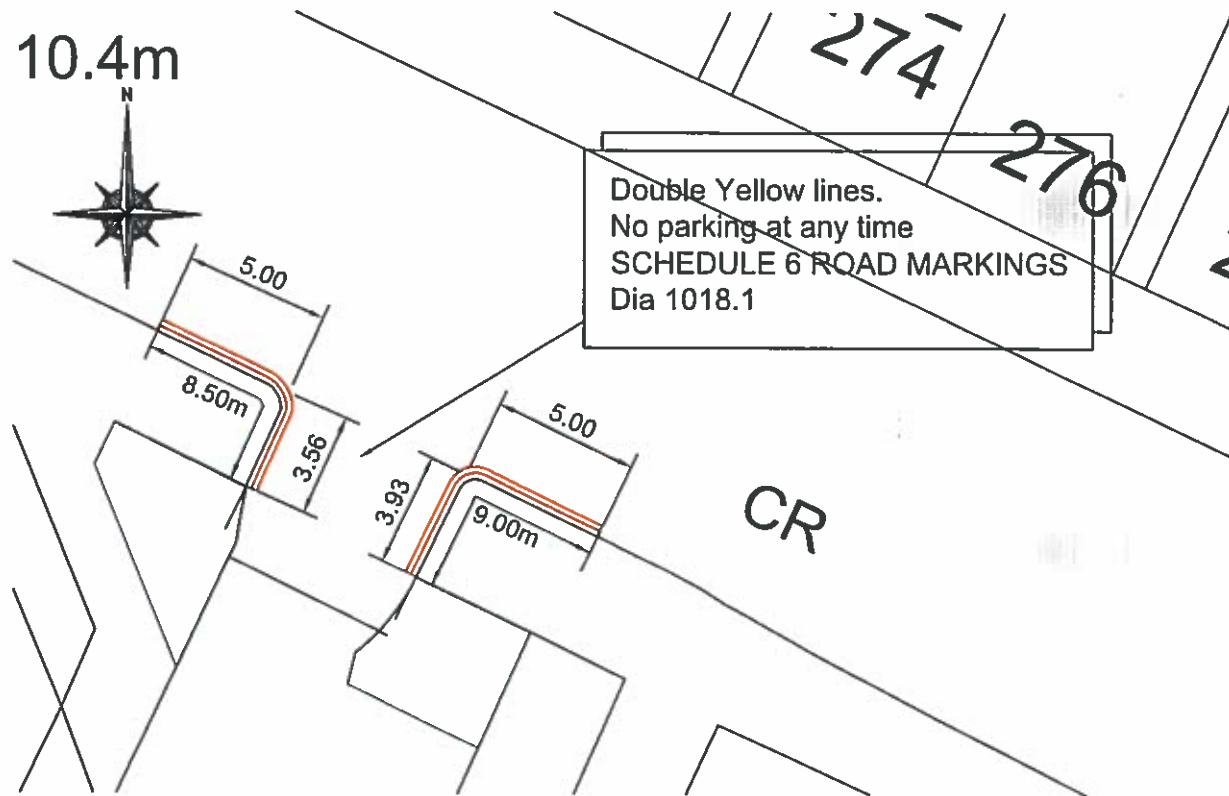
**PAISLEY DRIVE  
 PROPOSED DOUBLE YELLOW  
 LINES**

Drawn by: WLB  
 Scale: NTS  
 Checked by:

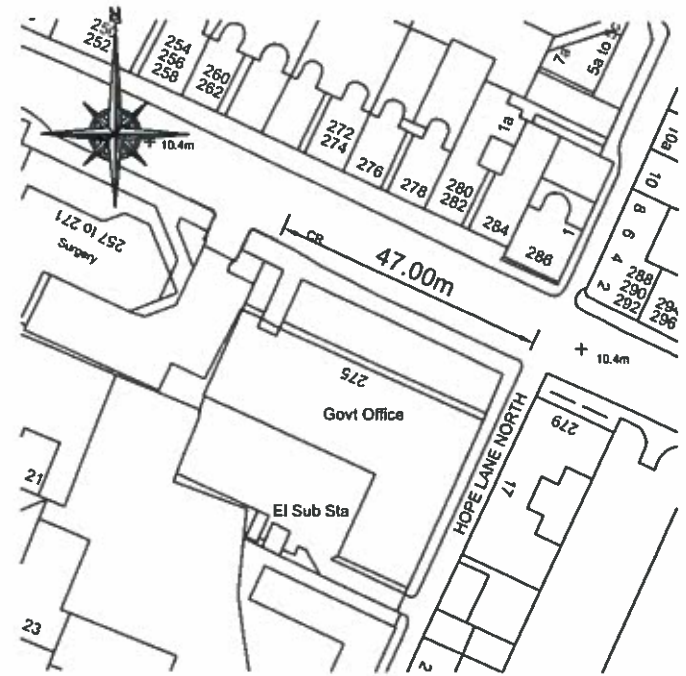
DRG. NO.

DRG. NO. SFC/EAST/W14/PD/DYL/WLB001

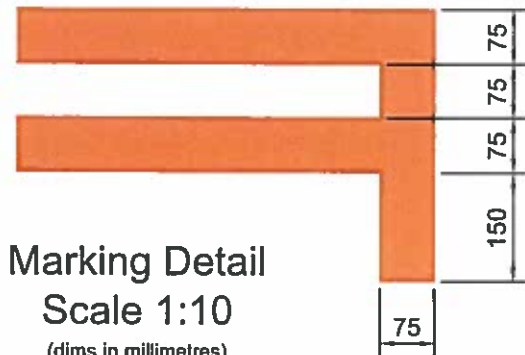
10.4m



Site Plan  
Scale 1:500

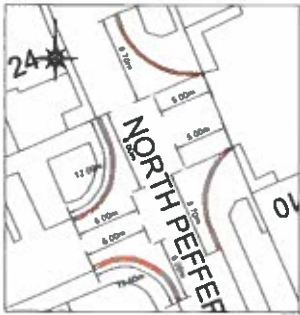


Site Location Plan  
Scale 1:1250



Marking Detail  
Scale 1:10  
(dims in millimetres)

<b>• EDINBURGH •</b> THE CITY OF EDINBURGH COUNCIL		
The City of Edinburgh Council East Neighbourhood Office 101 Niddrie Mains Road, Edinburgh EH16 4ZG Tel. No. 0131 - 529 - 3111		<b>East Neighbourhood Environment Team</b>
<b>257 PORTOBELLO HIGH STREET PARKING RESTRICTIONS</b>		
Date: April 2014 Scale:	Job. No.	Drawn by: KDA Checked by: AM
<b>Drg No. W17/002/RM/APR 2014</b>		



**Road Marking : Location 4**  
**North Peffer Place junction**  
 Scale 1:250



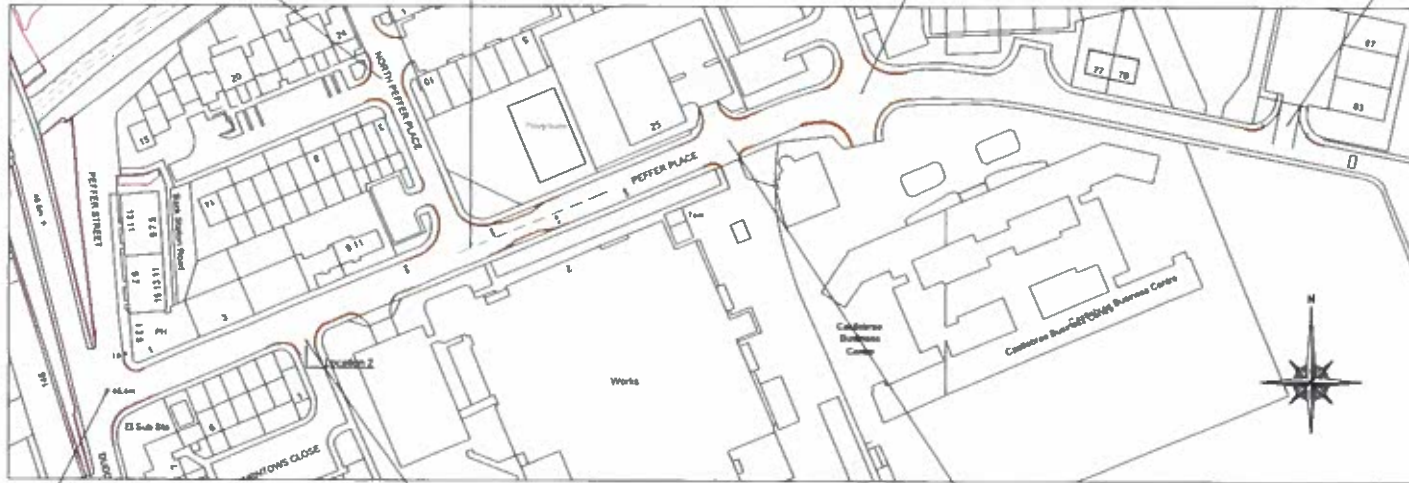
**Road Marking : Location 3**  
**North Peffer Place junction**  
**with Peffer Place.**  
 Scale 1:250



**Road Marking : Location 6** Access roads on  
**Peffer Place approx 126.00 metres from North Peffer Place.**  
 Scale 1:250



**Road Marking : Location 7**  
**Access road at Harewood Road at**  
**Industrial Units.**  
 Scale 1:250



**PEFFER PLACE : LOCATION PLAN**  
 SCALE 1:750



**Road Marking : Location 1**  
**Junction Of Duddingston Road West**  
**with Peffer Place**  
 Scale 1:250



**Road Marking : Location 2**  
**Calmtown Close junction with Peffer**  
**Place**  
 Scale 1:250



**Road Marking : Location 5**  
**Access roads on Peffer Place approx 65.00metres**  
**from North Peffer Place.**  
 Scale 1:250

4	General Arrangements	10*	Sept 2013	10*
REVISION	DETAILS	BY	DATE	CHECKED

**• EDINBURGH •**  
 THE CITY OF EDINBURGH COUNCIL

The City of Edinburgh Council  
 East Neighbourhood Office  
 191 Harewood Place Road, Edinburgh  
 EH16 4TG Tel: 0131 411111 Fax: 0131 411111

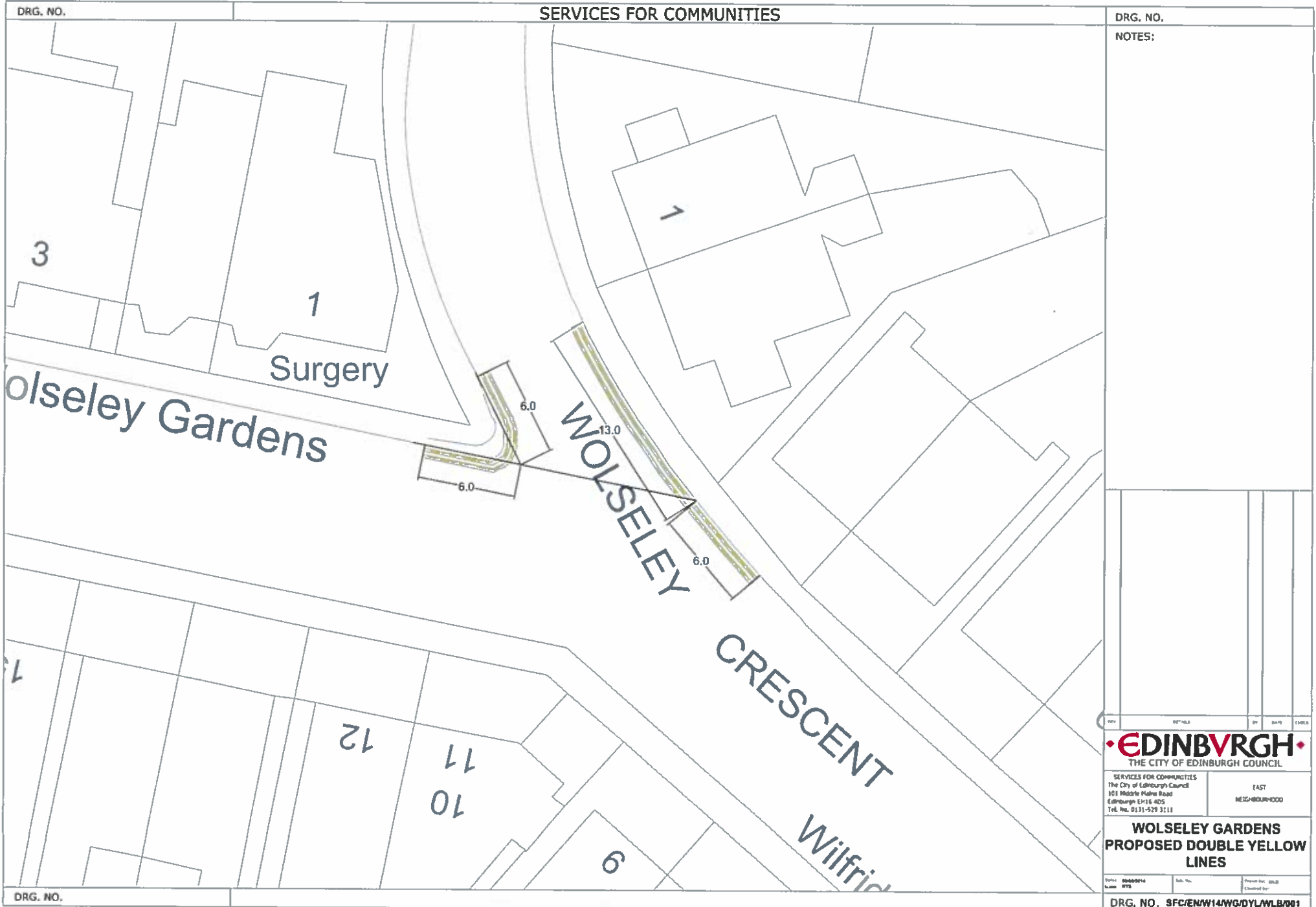
**East Neighbourhood**  
**Environment**  
**Team**

**PEFFER PLACE**  
**PROPOSED PARKING**  
**RESTRICTIONS**

Date: May 2014  
 Author: Mr Whelan  
 Scale: 1:250  
 Drawn: Mr Whelan  
 Checked: Mr Whelan

**Drp No. W17/001/RM/Apr 2014**

SERVICES FOR COMMUNITIES



DRG. NO.  
NOTES:

<p><b>EDINBURGH</b> THE CITY OF EDINBURGH COUNCIL</p>	
<p>SERVICES FOR COMMUNITIES The City of Edinburgh Council 101 Middle Main Road Edinburgh EH16 4DS Tel. No. 0131-529 3111</p>	<p>EAST NEIGHBOURHOOD</p>
<p><b>WOLSELEY GARDENS PROPOSED DOUBLE YELLOW LINES</b></p>	
<p>Date: 09/09/2014 Name: STS</p>	<p>Scale: 1:500 Checked by:</p>
<p>DRG. NO. SFC/EN/W14/WG/DYL/WLB/001</p>	